

## Littlebourne War Memorial Hall

Your local amenity for family get-togethers and parties, as well as Keep Fit, Zumba, yoga, Bridge, Inner Wheel, Afternoon Club & the uniformed groups.

For information or to enquire about booking, please email Gill: [littlebournehall@gmail.com](mailto:littlebournehall@gmail.com)

## East Kent Mole Catcher

No Mole – No Fee

Your local Mole catcher, offering Mole control for your lawns, gardens & paddocks.

Public liability insurance covered.  
07876 686543  
[molecatcherkeith@hotmail.com](mailto:molecatcherkeith@hotmail.com)



## FS Property Maintenance & Handyman

All aspects of interior & exterior, residential & commercial property maintenance undertaken.

All jobs big or small. Friendly, reliable, reasonable

07980 364694/01227 722278



### ALL TYPE LANDSCAPE GARDENING

ALL TYPES OF WORK CARRIED OUT

PATHS • PATIOS • DRIVEWAYS • BRICKWORK  
BLOCK PAVING • CONCRETE • SLABBING  
SHINGLE • TURFING • FENCING

FREE ESTIMATES Find us on myBuilder

TEL: 07778 063963 or 07592 670964  
01227 785200  
Email: [alltypequotes@yahoo.com](mailto:alltypequotes@yahoo.com)

If you would like to advertise your business in this newsletter, please contact the clerk for more information [clerk@littlebourneparishcouncil.gov.uk](mailto:clerk@littlebourneparishcouncil.gov.uk)

## Your Littlebourne Councillors:

Cllr Peter Farrow (Chairman) <a href="mailto:Chair@Littlebourneparishcouncil.gov.uk">Chair@Littlebourneparishcouncil.gov.uk</a> Or <a href="mailto:Cllr.Farrow@Littlebourneparishcouncil.gov.uk">Cllr.Farrow@Littlebourneparishcouncil.gov.uk</a> 01227 722370
Cllr Mick Giles (Vice Chairman) <a href="mailto:Cllr.Giles@Littlebourneparishcouncil.gov.uk">Cllr.Giles@Littlebourneparishcouncil.gov.uk</a> 01227 728228
Cllr Cate Reid <a href="mailto:Cllr.Reid@Littlebourneparishcouncil.gov.uk">Cllr.Reid@Littlebourneparishcouncil.gov.uk</a> 01227 721831/07931 560313
Cllr Brian Hurlow <a href="mailto:Cllr.Hurlow@Littlebourneparishcouncil.gov.uk">Cllr.Hurlow@Littlebourneparishcouncil.gov.uk</a> 01227 720848
Cllr Melanie Moore <a href="mailto:Cllr.Moore@Littlebourneparishcouncil.gov.uk">Cllr.Moore@Littlebourneparishcouncil.gov.uk</a> 07768 294912
Cllr Lee Castle <a href="mailto:Cllr.Castle@Littlebourneparishcouncil.gov.uk">Cllr.Castle@Littlebourneparishcouncil.gov.uk</a> 07875 402888
Cllr Andrew Fraser <a href="mailto:Cllr.Fraser@Littlebourneparishcouncil.gov.uk">Cllr.Fraser@Littlebourneparishcouncil.gov.uk</a>
Cllr Rebecca Marsh <a href="mailto:Cllr.marsh@Littlebourneparishcouncil.gov.uk">Cllr.marsh@Littlebourneparishcouncil.gov.uk</a>
Vacancy
Gail Hubbard (Parish Clerk) <a href="mailto:clerk@Littlebourneparishcouncil.gov.uk">clerk@Littlebourneparishcouncil.gov.uk</a> 01227 721500 (LPC office)
<b>Canterbury City Councillor</b> Cllr Lee Castle <a href="mailto:Lee.castle@councillor.canterbury.gov.uk">Lee.castle@councillor.canterbury.gov.uk</a> 07875 402888
<b>Kent County Councillor</b> Cllr Mike Sole <a href="mailto:Mike.sole@kent.gov.uk">Mike.sole@kent.gov.uk</a> 07739 486804
<b>KCC Community Warden -Little Stour Ward</b> Roger Lithgow 07812 089485 / <a href="mailto:Roger.lithgow@kent.gov.uk">Roger.lithgow@kent.gov.uk</a>



# LPC NEWS MAY 2026

Littlebourne Parish Council Newsletter

Issue 56, May 2026

## Welcome

Welcome to the Littlebourne Parish Council's quarterly newsletter. Please also remember to visit our website:

[www.littlebourneparishcouncil.gov.uk](http://www.littlebourneparishcouncil.gov.uk)



[www.facebook.com/littlebourne](https://www.facebook.com/littlebourne)

## Village Diary

Up and coming events in Littlebourne to look out for:

### Wednesday 6<sup>th</sup> May

LPC Meeting 7pm in LWMH meeting room

### Sunday 10<sup>th</sup> May

Freshers Day at The Barn 10-2pm

### Thursday 21<sup>st</sup> May

Bingo in the LWMH lounge 2pm

### Wednesday 3<sup>rd</sup> June

LPC Meeting 7pm in LWMH meeting room

### Thursday 18<sup>th</sup> June

Bingo in the LWMH lounge 2pm

### Sunday 28<sup>th</sup> June

Summer fun day/craft fayre at The Barn 10-4pm

## Village email distribution list

This list is now up and running, if you would like to join and receive useful information such as road closures, village activities and City and County Cllr reports please sign up by emailing the Clerk on [villagenews@littlebourneparishcouncil.gov.uk](mailto:villagenews@littlebourneparishcouncil.gov.uk)

## Contact Us

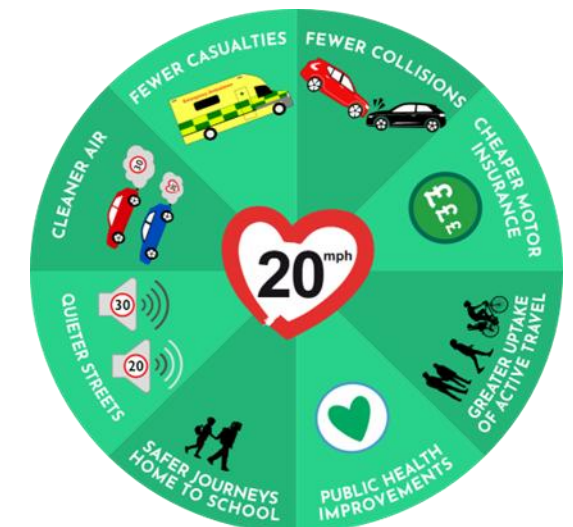
Littlebourne Parish Council Newsletter  
[Clerk@littlebourneparishcouncil.gov.uk](mailto:Clerk@littlebourneparishcouncil.gov.uk)  
 01227 721500

[www.littlebourneparishcouncil.gov.uk](http://www.littlebourneparishcouncil.gov.uk)



## High Street Phone box

LPC have adopted the red telephone box on the High Street. BT removed the phone equipment from this box at the end of 2025 due to lack of usage. We have a small group of people interested in helping with the restoration and we would still love to hear from anyone who wants to help or any ideas of what to do with the space. Please contact Cllr Melanie Moore [Cllr.Moore@littlebourneparishcouncil.gov.uk](mailto:Cllr.Moore@littlebourneparishcouncil.gov.uk) to get involved.





### Millennium Award Winner 2026

#### Tim Bostock

For his tireless detective work and efforts over the last few years to help understand and protect the Little Stour (and local community) from additional sewage impacts posed by the draft Local Plan and proposed Gladman development on The Hill.

Tim was presented with £200 by The Chairman at the Annual Parish Meeting on 18<sup>th</sup> March. His name will be added to the honours board in the hall.

### Councillor vacancy

A vacancy exists on Littlebourne Parish Council and the council have now been given the power to co-opt to fill this.

LPC are welcoming applications from residents – Do you have a genuine interest in what happens in your community? Ever wondered what a Parish Councillor has to do and if this is for you?

- Attend Parish Council meetings – once a month and occasionally additional ones
- Take any issues raised by residents to the parish council on the residents' behalf
- Carry out duties, to represent the wishes of the residents, to protect the local environment and infrastructure, footpaths and highways, lobby for improvements to services, implement new projects for the benefit of the parish and fund raising for new projects.
- Comment on all planning applications within the parish
- Sit on sub-committees where appropriate, such as Planning, Finance and highways
- Represent the Council externally

You must be aged 18 years or over, be a qualifying Commonwealth citizen, a citizen of the Republic of

Ireland or a qualifying EU citizen or an EU citizen with retained rights, and

- (1) Be on the electoral roll in the parish; Or
- (2) During the preceding twelve months occupied land or other premises as owner or tenant in the parish; Or
- (3) During the same period, resided in that area or within three miles thereof; Or
- (4) During the same period, had your principal or only place of work in that area.

If you wish to apply please send a brief summary of yourself and what you might like to bring to the Council, to the Clerk on [clerk@littlebourneparishcouncil.gov.uk](mailto:clerk@littlebourneparishcouncil.gov.uk)

### The Hill development

Unfortunately, the Planning Inspector upheld Gladman's Appeal in March and granted the permission for 300 homes to be built on land at The Hill, Littlebourne. We will now await reserved matters applications to agree the details, such as access, type of properties to be built and other facilities to be provided within the site. A huge thank you to all those involved in the Littlebourne Action Group, that took part in this fight and all those that spoke in the Guildhall at the Appeal and previous Planning Committee meetings.

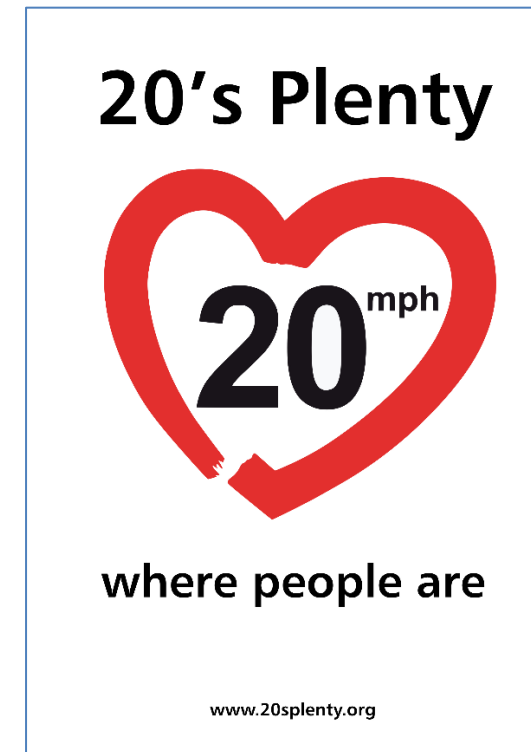
LPC made the decision to refund all the donations received for our Public Inquiry Funding Appeal, (GoFundMe) the council did not engage the services of a barrister as in the end LPC chose for many reasons not to be a Rule 6 party. Experts were used in this appeal process, some offered their services without charge, so the end cost has been kept to a minimum. Thank you again to everyone for your support.

### Parking on double yellow lines

Canterbury City Council's parking wardens have been out in the village and recently ticketed vehicles parked on the double yellow lines at the High Street end of Jubilee Road. Unfortunately, this is an area where vehicles are often parked illegally causing inconvenience to residents and other motorists. LPC would urge you to please park considerately in the village.

### 20mph materials

LPC have a selection of wheelie bin stickers and window stickers for residents to collect for free from the parish office.



### Littlebourne housing – Are you on our housing List?

Do you have a housing need? Please don't forget to register your interest with LPC. There are a number of one, two, three and four bed properties within the Court and List Meadows estate that require you to have a local connection to Littlebourne. These properties often come available at short notice and when they do if we already have your details it can assist with the properties being let quickly and fairly. Please remember that you must also be on the City Council housing list. Please contact the clerk for a local connection form [clerk@littlebourneparishcouncil.gov.uk](mailto:clerk@littlebourneparishcouncil.gov.uk) or download one direct from the parish website.

### Litter bins & dog fouling

Littlebourne has a good provision of litter and dog waste bins compared to other villages in the district. LPC are often asked to provide more bins and over the past year we provided a new bin on the Laurels opens space and replaced the bin on the List with a larger capacity model. However, it seems there are always those that will not use the provided bins and allow their dogs to foul the pavements and open spaces and not clear up after them. If a red dog waste bin is unavailable, litter bins

may be used if the mess is bagged. Fixed penalty notices can be issued by Canterbury City Council wardens for anyone who does not comply with the regulations. You can report incidents at [www.canterbury.gov.uk](http://www.canterbury.gov.uk)

### 2026 Annual Parish Meeting

This year's Annual Parish Meeting took place on 18th March in the LWMH lounge. Several Councillors, as well as representatives from local groups such as the Four Villages Eco Group, Littlebourne LHS, and Littlebourne Hall, presented reports on the year's activities. After the formal proceedings, wine and nibbles were served, providing a relaxed atmosphere for conversation. Attendees also viewed displays on the Broad Oak Reservoir plans and collected 20mph stickers.

The Annual Parish Meeting is a statutory requirement and must be held each year between March and May. It is not a council business meeting, but rather an opportunity for villagers to hear updates on various local initiatives and activities.

**Need an angel?**  
**Compassionate care for your loved ones**

At Visiting Angels, our carers are the most important people in the business. By retaining the best carers, we can offer continuous, quality, at-home care.

Call us today for a free no-obligation assessment.

01227 204 858



**50% of all pedestrian fatalities and 80% of serious injuries, due to the frontal impact of a car, happen at 21-30mph, but only rarely at 20mph or below, as there is more time to react, brake, stop, and ideally, avoid a crash.**



Source: [www.20splenty.org/halloween](http://www.20splenty.org/halloween)

Design: Sue Nicholls